




# **FIREWOOD** *processors*



*Production of larger quantities of firewood has never been as easy and quick as with the TITAN firewood processor. It ensures safe use and easy maintenance. The machine is also environmentally friendly because it does not pollute the environment and the leftover wood after cutting and splitting can be recovered for further processing.*

**TITAN 40/20 PREMIUM**

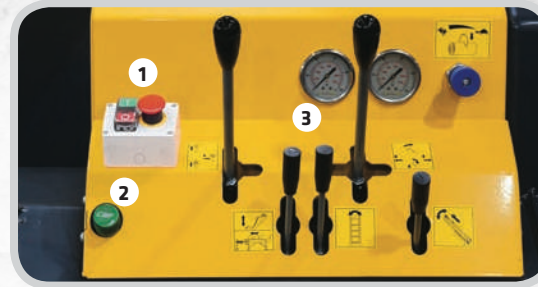
CD | CD TR | CD+E | CD+E TR

# TITAN 40/20 PREMIUM

The firewood processor TITAN 40/20 premium for larger quantities of firewood is a compact, reliable and mobile solution.



Thanks to its resilience to foreign materials in the wood and the shape of its teeth, the cemented carbide circular saw will cut through the log with an incredible speed. The movement of the circular saw, including the adjustment of the cutting speed, is hydraulically controlled.



Hydraulic control manometers display system pressure for auxiliary functions and splitting pressure.

1. The ON/OFF switch and emergency stop switch when the machine operates with the electric motor.
2. Cutting speed adjustment.
3. Hydraulic control levers.

In addition to easy maintenance, these features enable the machine to be used under harsh conditions.

### ECO FRIENDLY

The circular saw requires no lubrication with oil which could be dispersed in the environment, so there is no risk of environmental pollution.



TITAN 40/20 premium CD+E



### OPTION

Telescopic hydraulic lifting table for logs up to 4000 mm.



Driven in-feed rollers.



Axle kit – 200/60/R14.5 wheels.



1. 15 kW electric motor.  
2. Category II and III linkage.



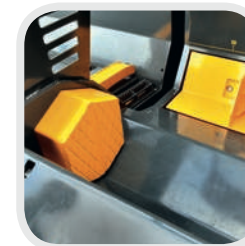
Hydraulic clamp holds log during cutting.



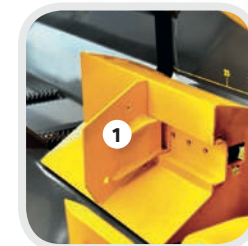
Mechanical winch for adjusting conveyor height.



Conveyor belt adjusting position L/R ±15°.



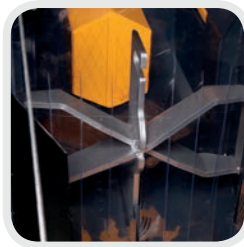
Automatic Autospeed valve for splitting force regulation.



Hydraulic feeder moves logs from cutting to splitting part.  
1. Log length guide automatic release.



Splitting length 25, 33, 40, 50 or 60 cm.



Hydraulically adjustable height of the splitting knife 2-4, 2-6, 2-8, 2-12.



Temperature and oil level indicators.



Towing hitch for linkage tool bar (draw bar - optional).



Pickaxe holder.

**TITAN 40/20 premium with LOG DECK**

- Mechanical-hydraulic control
- The circular saw and the cutting/splitting assembly are installed at the same level – low enough to prevent logs from falling off
- The machine can be transported with a minimum 45-HP tractor

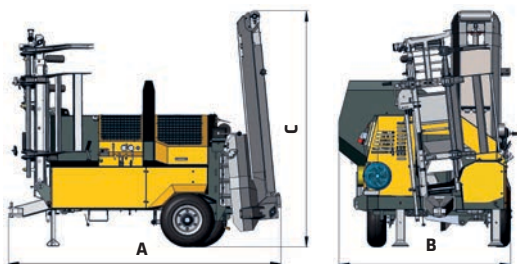


**Class**

**TITAN 40/20 premium**

| Model   |           | CD                 | CD TR              | CD+E               | CD+E TR            |
|---|-----------|--------------------|--------------------|--------------------|--------------------|
| Engine power  | kW        | /                  | /                  | 15                 | 15                 |
| Recommended tractor power   | kW/HP     | 35/45              | 35/45              | 35/45              | 35/45              |
| Max. cutting diameter   | mm        | 400                | 400                | 400                | 400                |
| Splitting force   | kN/t      | 200/20             | 200/20             | 200/20             | 200/20             |
| Log lengths   | cm        | 25, 33, 40, 50, 60 | 25, 33, 40, 50, 60 | 25, 33, 40, 50, 60 | 25, 33, 40, 50, 60 |
| Circular saw diameter   | mm        | 1000               | 1000               | 1000               | 1000               |
| Weight*   | kg        | 1650               | 1850               | 1800               | 2000               |
| Dimensions  | A         | 3120               | 3120               | 3120               | 3120               |
|   | B         | 1970               | 1970               | 1970               | 1970               |
|   | C         | 2700               | 2700               | 2700               | 2700               |
| Oil quantity  | l         | 110                | 110                | 110                | 110                |
| Conveyor belt slew (L/R ± 15°)  | mechanic  | ●                  | ●                  | ●                  | ●                  |
|   | hydraulic | ●                  | ●                  | ●                  | ●                  |
| In-feed bed with 6 hydraulic rollers (height cca 600/length 2000)   |           | ●                  | ●                  | ●                  | ●                  |
| Pickaxe holder  |           | ●                  | ●                  | ●                  | ●                  |
| Small pickaxe holder  |           | ●                  | ●                  | ●                  | ●                  |
| Auto-speed valve  |           | ●                  | ●                  | ●                  | ●                  |
| Telescopic conveyor belt with a mechanical winch for height adjustment and telescopic cylinder (L 5000 / W 350) |           | ●                  | ●                  | ●                  | ●                  |
| Telescopic hydraulic lifting table  |           | ●                  | ●                  | ●                  | ●                  |
| Splitting knife 2-4   | 1 pcs     | ●                  | ●                  | ●                  | ●                  |
| Splitting knife 2-6 / 2-8 / 2-12  | 1 pcs     | ●                  | ●                  | ●                  | ●                  |
| Oil heater  |           | /                  | /                  | ●                  | ●                  |
| Oil cooler  |           | ●                  | ●                  | ●                  | ●                  |
| Separator   |           | ●                  | ●                  | ●                  | ●                  |

● Standard | ● Option | / Not possible | CD - PTO (tractor drive) | CD-E - Combination | TR - Wheels | \*The weight of the tractor is important during transport.







UNIFOREST

UNIFOREST  
TITAN 40/20 PREMIUM

40