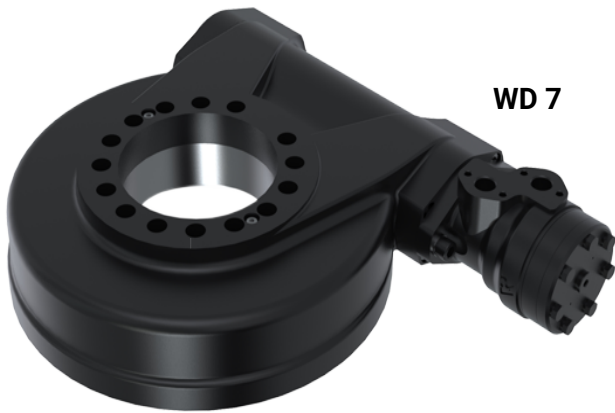


ROTECH | WD-WORMDRIVE RIGID MOUNT ROTATORS WD7 - WD25 NSL



KEY FEATURES

- Specially designed low ratio worm drives
- NSL-non self locking
- Holds load steady at any angle (with optional brake)
- Steel gears & flange for increased durability
- High pressure construction
- High torque
- Optimized positioning performance
- Ultra compact design
- Endless 360°
- Pressure regulated block standard

NON SELFLOCKING WORM DRIVE

MODEL SPECIFICATIONS	WEIGHT Kg	PRESSURE Bar	FLOW l/min	N.m	RIGID ton	Max Rev/Min	STATIC AXIAL kN	Radial load static kN	Height mm	Gear Ratio
WD 7 NSL	40	140	17	2180	1-3.5	5.0	220	90	85	23:1
WD 9 NSL	62	140	20	2880	3.5-6.5	5.0	578	215	108	31:1
WD 14 NSL	90	140	30	4000	7-10	5.0	960	360	108	43:1
WD 14/2 NSL	110	100	60	6000	8-13	5.0	960	360	108	43:1
WD 17/2 NSL	135	100	60	8400	13-19	5.0	1166	435	108	52:1
WD 21/2 NSL	225	100	100	10200	16-25	5.0	1600	640	130	45:1
WD 25/2 NSL	300	100	100	14000	23-30	5.0	2400	945	151	54:1